

PLATINUM LIFE

styling spaces
with stone
veneers

Dr. Hosam Shaheen
Mob. 00966 541222246
Email. drhosam.sha@gmail.com

30 YEARS

OF EXPERTISE IN
STONE BUSINESS
WORLDWIDE SUPPLY
SERVICE QUALITY
VALUE & RELIABILITY

1st company to develop and introduce real flexible stone veneer to the world

index

1

Who We Are

1-6

4

About Products

15-68

2

Our Story

7-8

5

Our Values, Our World

69-72

3

Why Choose Us

9-14





who we are

the artistry of thin stone veneers



Pan Creations India (PCI) is a revolutionary company that pioneered the manufacture and export of ultra-thin stone veneers back in 2004. Since then, the company has grown robustly under the collective, inspiring stewardship of Sunil and Deepti Dhariwal. Mr. Dhariwal comes with years of expertise and experience in the geology of stone, given that his previous company manufactured and exported real stone since 1991. Today, PCI continues its legacy of being stone veneer experts, supplying best-quality cut-to-size stone veneers for high-end commercial projects worldwide.

When we think of stone, we instinctively think “tough” and “rigid.” That this beautiful material of nature could be bent was something unimaginable. Pan Creations was the first company to explore “stone” in a unique manner in 2004 – as ultra-thin and flexible veneer sheets that can be affixed anywhere.

This exciting space is the foundation on which we stand proudly today. PCI was the first Indian company to manufacture and export ultra-thin slate stone veneers worldwide.

Over the years, our unrivalled product quality, flawless execution and honest customer service have brought delight after delight to our customers and their projects. At PCI, we go the extra mile to help a customer’s business flourish, beyond the products we sell.

From art centres, museums, and malls to casinos, hotels, and modern office complexes, our sturdy, beautiful stone veneers adorn so many sites. It humbles us further when we see the results of that one idea, whose endless possibilities have taken our product across the globe!

Our sense of aesthetic is constantly inspired by not only the latest market trends but also what our customers want. PCI is an Indian-origin company that exports to the whole world, staying true to *Make in India.*





Delivering flawless performance through operational excellence

Embrace the natural way to make spaces beautiful

Our pioneering product – the ultra-thin slate stone veneer – is a revolutionary cladding product that suits all architectural and interior decor requirements. Its natural properties not only give it a distinct look and vibe, but also ensure durability.

Being super lightweight and flexible, these veneers are easy to install on walls, floors, furniture, tabletops, decorative accents, and more. Our ultra-thin veneers of natural slate, sandstone, limestone, quartzite and marble are available in 40+ colours.

Our revolutionary ultra-thin stone veneers are:

- Just 1–2 mm thick stone layers
- Made by extracting thin sheets from slabs of natural stones, hence eco-friendly
- Lightweight
- Flexible and can be bent in concave, convex, arched or radial forms
- Weather-resistant: can withstand extreme heat and cold
- Easy to fix on internal and external surfaces



Our state-of-the-art four-acre plant has a dedicated area for each stage of the process, reflecting the utmost importance we assign to each step. The plant is equipped with superior machinery, skilled manpower, and clearly defined systems and processes, all of which enhance our capability of processing custom orders with different designs, types, colours and finish of stones.

We pride ourselves on our unmatched quality and craftsmanship, but we also know there are so many more miles to go before we rest. We measure our achievements not just in business, but also in our efforts towards sustainability and equality. As a conscientious company, we keep striving to do our bit to help people and the planet.

Since the start, our employees and stakeholders continually aspire to reach greater heights of excellence in product innovation and customer service. Over the years, we have built long-standing relationships with leading contractors and architects in North and South America, Europe, China, Japan, Australia as well as Germany and Spain.



STONE YARD



WAREHOUSE



PRODUCTION SHEDS



PACKING SHED

We are here
for you



PCI has always built
and upheld strong
bonds with customers,
relationships that go
beyond the product
and profit.

The founder-couple's deep desire to foster a learning company puts knowledge and agility at the forefront. At PCI, we believe in complete transparency and follow best practices in our ways of working. We love inviting our partners, customers and end users to visit our stone quarries and processing facilities and experience the "difference" for themselves.

Reliability, unmatched expertise, and honesty in business – a few of the reasons we're the preferred choice of many.



2

The story of how PCI came to be is an inspiring one.

Our expertise in exporting stone spans 30+ years. We've manufactured, processed and exported a wide variety of natural stones like slate, limestone, and quartzite, executing almost 150+ cut-to-size real stone projects worldwide.

In 2004, our founder-couple, Deepti and Sunil Dhariwal, wanted to push the envelope and began exploring various ideas for business innovation with stone. The turning point came during a factory visit by a German architect, who planted the seed of an idea... an idea that would eventually change the way we perceive stone.

The founder-couple took this idea and turned it into a big revolutionary product: the ultra-thin stone veneer. The journey was not an easy one. Their conviction in the technology and their grasp of what the customer wants helped them overcome roadblocks.

Deepti and Sunil, armed with months of technical research, market insights, customer conversations, and more, worked side by side to translate their vision into a reality. Their innovation, **the ultra-thin stone veneer, went on to revolutionize the stone industry, leaving an indelible impression on customers across the globe.**

This innovation allowed "stone," which is considered strong and unbreakable, to bend, and be used in ways to enhance the aesthetics of the spaces it occupies.

Our journey of ultra-thin stone veneers started with 10 colours, ultimately growing to 43 colours. Making thin, flexible stone veneers a reality for our customers has been our dream. And delighting our customers at every step of the process makes our journey even more glorious!

our story

a story of
craftmanship &
collaboration





why choose us

a cut above
the rest

3

We were the first to
introduce ultra-thin
stone veneers

Pan Creations India is the pioneer
of ultra-thin, lightweight, flexible
stone veneers; since 2004,
we have manufactured and
exported premium quality veneers
across the globe. This fact keeps us
grounded, but it also pushes us to
do more... innovate more, achieve
more, delight more.



We have deep experience and expertise

PCI is helmed by passionate professionals from the get-go. Their high standards push them to strive for perfection in everything they do. **Their exposure to international markets and problem areas enables them to empathize and problem-solve with ease.**

Take the journey of our founder-couple, Deepti and Sunil Dhariwal. An engineer by profession, Sunil leveraged his passion for stone and used it to revolutionize the industry. From learning about stone to spending actual time at stone quarries and finding new ways to work with stone, Sunil is a self-taught expert. He was supported by his wife and business

We build on our past to create our future

Today, Sunil and Deepti's daughters, Panna and Yashodhara, are poised to take the family business to newer heights. They're passionate knowledge seekers much like their parents.

Panna is completely immersed in the family business and helms the marketing and branding facets. She graduated from University of Hertfordshire, UK, in Design and Marketing. Having worked with big names like Elle Décor and Conde Nast in Mumbai, Panna frequently engaged with international designers and architects. Although she excelled at and enjoyed her work, she started to feel less challenged by it. She decided to move back home and join her family business.

In the initial years, Panna immersed herself in the various facets of the company, from accounts to exports to product design, learning the ropes from the people on the ground. By attending trade shows and meeting international buyers, she acquired the confidence and knowledge required to steer PCI ahead.

partner, Deepti. A gynaecologist by profession, Deepti's background in chemistry helped her explore new ways to better the business. Her ability to connect with people easily and earnestly helped buyers to put their trust in the product and the people behind the product.

Sunil and Deepti's technical insights, curious nature, self-learning nature, and strong customer connect helped them take Pan Creations India towards excellence. Today, their winning combination of emotional connect and technical knowledge is responsible for the company's many success stories.

Panna's conviction in the product and in her parents' vision has made her unwavering in her efforts today.

Soon, she will be joined by her sister Yashodhara, who is completing her graduation in Computer Science from the USA. The desire to constantly keep learning and stay relevant runs through the family. A keen analytical mind and minors in digital marketing, mathematics and business help Yashodhara to be future-ready for the family business.

We created a technological revolution across the world

An Indian company that innovated and revolutionized how stone is imagined and used – that's PCI in a nutshell. Being a pioneer of ultra-thin stone veneers in India, we researched and developed the necessary technologies on our own. **Our desire to achieve only the best results in ultra-thin stone veneer led our teams to create processes and develop equipment – a unique aspect that sets us apart from the rest.**

We're genuinely interested in every step of the manufacturing

process that makes our product. From going insights into the composition of stone, temperature, pressure, time and chemicals required, to which resin, adhesive or sealant should be used for diverse applications, we're always ahead of the curve.

This is why we love engaging with customers on technical issues or queries, and we offer detailed support and solutions. We also have qualified staff who can read CAD drawings and are aware of the stone anchoring systems in the world.



We're passionate and professional

Meet anyone who's worked with us, and you'll hear how the PCI team puts their heart and soul into any project, big or small. Our goal is not just sales or profit. It's to build relationships and ensure our customers are 100% satisfied.

Both Sunil and Deepti, as well as the core team, have exceptional prowess in diverse fields. Their constant curiosity and desire to learn ensure that they add new ways of doing business and keeping pace with global trends.

Ensuring best-in-class quality in our products and services is what differentiates us. Prompt responses (via email, WhatsApp, or call), detailed assistance, technical knowhow, unrivalled product quality... these are some things you can expect from us. Professionalism, ethical ways of working, and never-give-up spirit make us who we are today. We're proud to be that company that our customers trust without a doubt.

We give attention to every detail in our state-of-the-art facility

Our four-acre-vast plant is equipped with the latest machinery, run by well-trained and well-protected workers. **People are our priority, and our workers don the mandatory workwear, in line with international standards.** We follow stringent quality checks at every stage as well as well-documented and compliant systems to ensure flawless execution.

We deliver superior-quality products every time

Our ultra-thin slate stone veneers are composed of 100% natural stone layers. Their light weight and flexibility make them ideal for many internal and external applications on curved, horizontal and vertical surfaces. Our products are found on wall panels and cladding, doors and cabinets, trim and backsplashes, kitchens and bathroom, as well as flooring.

We maintain strict schedules and timeliness right from quarrying to product delivery. Our factory has separate allocated areas for each process, a rare sight in other companies. **We don't hold back when it comes to 100% quality satisfaction.**

Our revolutionary product gives you the natural beauty of stone without being rigid or heavy (each sheet has 0.6-2 mm thickness and some weigh less than or equal to 2 kgs). These veneers, when installed and sealed correctly, are weather-resistant and withstand extremely hot and cold climates. Eco-friendly and durable, ultra-thin stone veneers are the perfect choice to elevate the aesthetic value of a place.



We're committed to the environment

When it comes to sustainability, we prefer to do more and speak less. **Across the organization, in our manufacturing processes, on the shop floors, and in our charity, we're always seeking more ways to be conscious and responsible.** This is a value that runs deep within our veins.

Our production processes are designed such that the resin does not emit any harmful fumes when used on site. **This protects our people and our planet.** We also follow responsible waste disposal and rainwater harvesting, among other initiatives. More green activities are in the pipeline.

We're compliant and consistent

Our products are certified and conform to the ASTM standards. They are tested for compressive test strength, water absorption, and fire retardancy. With PCI, you will get no flaws and no inconsistency in the quality of stones. This is our promise.



Our ultra-thin stone veneers, with their beautiful properties and ease of use, have created infinite possibilities in elevating the design and aesthetics of any surface and space.

Industries We Serve

Our Product Categories

- Door manufacturers
- Flooring manufacturers
- Kitchen cabinet manufacturers
- Wall panel manufacturers
- Building exterior cladding
- Interior design
- Furniture making experts

- NR Grade (Fibre Glass Backing)
- UV Translucent (Fibre Glass Backing)
- PVA Grade (Fabric Backing)
- Real Sandstone Veneer (Fibre Glass Backing)
- PVA Cellulose Backing

our products

a revolutionary
vision



NR grade



stone
vener
swatches

SLATE / MICA COLORS

NR GRADE



Indian Autumn

Sizes Available (mm)		
1220 x 610	2100 x 1050	2400 x 1200
✓	✓	✓



Indian
Autumn Rustic

Sizes Available (mm)		
1220 x 610	2100 x 1050	2400 x 1200
✓	✓	✓



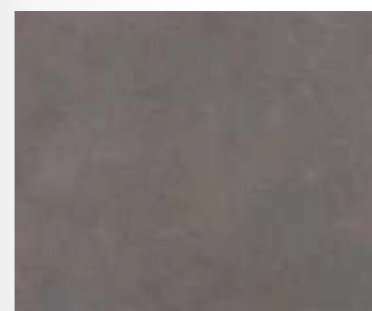
Sanjayani White

Sizes Available (mm)		
1220 x 610	2100 x 1050	2400 x 1200
✓	✓	✓



Multi Color

Sizes Available (mm)		
1220 x 610	2100 x 1050	2400 x 1200
✓	✓	✓



Multi Color
Grey

Sizes Available (mm)		
1220 x 610	2100 x 1050	2400 x 1200
✓	NA	NA



Multi Pink

Sizes Available (mm)		
1220 x 610	2100 x 1050	2400 x 1200
✓	✓	✓



California Gold

Sizes Available (mm)		
1220 x 610	2100 x 1050	2400 x 1200
✓	✓	✓



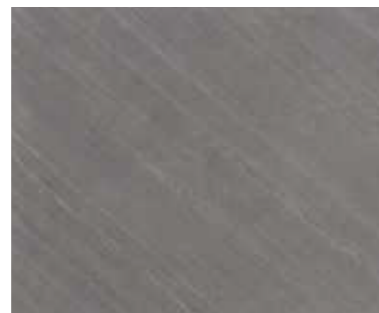
Terra Red

Sizes Available (mm)		
1220 x 610	2100 x 1050	2400 x 1200
✓	✓	✓



Tan

Sizes Available (mm)		
1220 x 610	2100 x 1050	2400 x 1200
✓	✓	✓



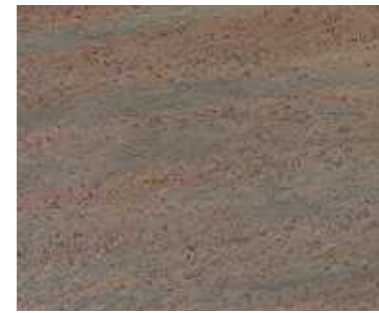
D. Black

Sizes Available (mm)		
1220 x 610	2100 x 1050	2400 x 1200
✓	✓	✓



Black

Sizes Available (mm)		
1220 x 610	2100 x 1050	2400 x 1200
✓	✓	✓



Copper

Sizes Available (mm)		
1220 x 610	2100 x 1050	2400 x 1200
✓	✓	✓



Copper-New

Sizes Available (mm)		
1220 x 610	2100 x 1050	2400 x 1200
✓	✓	✓



Jeera Green

Sizes Available (mm)		
1220 x 610	2100 x 1050	2400 x 1200
✓	✓	✓



Ocean Green

Sizes Available (mm)		
1220 x 610	2100 x 1050	2400 x 1200
✓	✓	✓



D. Green

Sizes Available (mm)		
1220 x 610	2100 x 1050	2400 x 1200
✓	✓	✓



Golden

Sizes Available (mm)		
1220 x 610	2100 x 1050	2400 x 1200
✓	✓	✓



Silver Shine

Sizes Available (mm)		
1220 x 610	2100 x 1050	2400 x 1200
✓	✓	✓



Silver Shine Gold

Sizes Available (mm)		
1220 x 610	2100 x 1050	2400 x 1200
✓	✓	✓



Burning Forest Copper

Sizes Available (mm)		
1220 x 610	2100 x 1050	2400 x 1200
✓	✓	✓



Galaxy Black

Sizes Available (mm)		
1220 x 610	2100 x 1050	2400 x 1200
✓	✓	✓



Silver Grey

Sizes Available (mm)		
1220 x 610	2100 x 1050	2400 x 1200
✓	✓	✓



Star Galaxy

Sizes Available (mm)		
1220 x 610	2100 x 1050	2400 x 1200
✓	✓	✓



Ice Pearl

Sizes Available (mm)		
1220 x 610	2100 x 1050	2400 x 1200
✓	✓	✓



Green Pearl

Sizes Available (mm)		
1220 x 610	2100 x 1050	2400 x 1200
✓	✓	✓

SLATE / MICA COLORS

NR GRADE



Jade Green

Sizes Available (mm)		
1220 x 610	2100 x 1050	2400 x 1200
✓	NA	NA



Cal Grey

Sizes Available (mm)		
1220 x 610	2100 x 1050	2400 x 1200
✓	✓	✓



Mal Grey

Sizes Available (mm)		
1220 x 610	2100 x 1050	2400 x 1200
✓	✓	✓



Lime Pink

Sizes Available (mm)		
1220 x 610	2100 x 1050	2400 x 1200
✓	✓	✓



Pink Pearl

Sizes Available (mm)		
1220 x 610	2100 x 1050	2400 x 1200
✓	✓	✓

SANDSTONE & MARBLE

NR GRADE



Teakwood Sandstone

Sizes Available (mm)		
1220 x 610	2100 x 1050	2400 x 1200
✓	✓	✓



White Sandstone

Sizes Available (mm)		
1220 x 610	2100 x 1050	2400 x 1200
✓	✓	✓



Tint Mint Sandstone

Sizes Available (mm)		
1220 x 610	2100 x 1050	2400 x 1200
✓	✓	✓



Red Sandstone

Sizes Available (mm)		
1220 x 610	2100 x 1050	2400 x 1200
✓	✓	✓



Rainforest Brown

Sizes Available (mm)		
1220 x 610	2100 x 1050	2400 x 1200
✓	✓	✓



Rainforest Green

Sizes Available (mm)		
1220 x 610	2100 x 1050	2400 x 1200
✓	✓	✓



Rainbow Sandstone

Sizes Available (mm)		
1220 x 610	2100 x 1050	2400 x 1200
✓	✓	✓



Monsoon Black

Sizes Available (mm)		
1220 x 610	2100 x 1050	2400 x 1200
✓	✓	✓



Ice Black

Sizes Available (mm)		
1220 x 610	2100 x 1050	2400 x 1200
✓	✓	✓



Spider White

Sizes Available (mm)		
1220 x 610	2100 x 1050	2400 x 1200
✓	✓	✓



Spider Black

Sizes Available (mm)		
1220 x 610	2100 x 1050	2400 x 1200
✓	✓	✓



Silvia

Sizes Available (mm)		
1220 x 610	2100 x 1050	2400 x 1200
✓	✓	✓



Zebra Black

Sizes Available (mm)		
1220 x 610	2100 x 1050	2400 x 1200
✓	NA	NA

UV translucent

stone
vener
swatches



SLATE / MICA COLORS

UV TRANSLUCENT



WITHOUT LIGHT

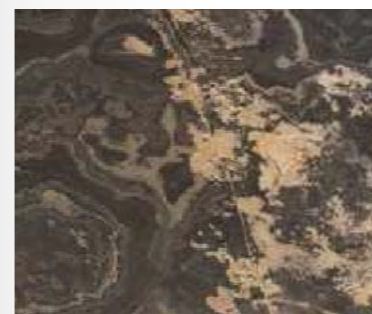


WITH LIGHT

Indian Autumn

Sizes Available (mm)

1220 x 610	2100 x 1050	2400 x 1200
✓	✓	✓



WITHOUT LIGHT



WITH LIGHT

Indian Autumn Rustic

Sizes Available (mm)

1220 x 610	2100 x 1050	2400 x 1200
✓	✓	✓



WITHOUT LIGHT



WITH LIGHT

Sanjayani White

Sizes Available (mm)

1220 x 610	2100 x 1050	2400 x 1200
✓	✓	✓



WITHOUT LIGHT



WITH LIGHT

Multi Color

Sizes Available (mm)

1220 x 610	2100 x 1050	2400 x 1200
✓	✓	✓



WITHOUT LIGHT



WITH LIGHT

Multi Color Grey

Sizes Available (mm)

1220 x 610	2100 x 1050	2400 x 1200
✓	NA	NA



WITHOUT LIGHT



WITH LIGHT

Multi Pink

Sizes Available (mm)		
1220 x 610	2100 x 1050	2400 x 1200
✓	✓	✓



WITHOUT LIGHT



WITH LIGHT

California Gold

Sizes Available (mm)		
1220 x 610	2100 x 1050	2400 x 1200
✓	✓	✓



WITHOUT LIGHT



WITH LIGHT

Terra Red

Sizes Available (mm)		
1220 x 610	2100 x 1050	2400 x 1200
✓	✓	✓



WITHOUT LIGHT



WITH LIGHT

Tan

Sizes Available (mm)		
1220 x 610	2100 x 1050	2400 x 1200
✓	✓	✓



WITHOUT LIGHT



WITH LIGHT

D. Black

Sizes Available (mm)		
1220 x 610	2100 x 1050	2400 x 1200
✓	✓	✓



WITHOUT LIGHT



WITH LIGHT

Black

Sizes Available (mm)		
1220 x 610	2100 x 1050	2400 x 1200
✓	✓	✓



WITHOUT LIGHT



WITH LIGHT

Copper

Sizes Available (mm)		
1220 x 610	2100 x 1050	2400 x 1200
✓	✓	✓



WITHOUT LIGHT



WITH LIGHT

Copper-New

Sizes Available (mm)		
1220 x 610	2100 x 1050	2400 x 1200
✓	✓	✓



WITHOUT LIGHT



WITH LIGHT

Jeera Green

Sizes Available (mm)		
1220 x 610	2100 x 1050	2400 x 1200
✓	✓	✓



WITHOUT LIGHT



WITH LIGHT

Ocean Green

Sizes Available (mm)		
1220 x 610	2100 x 1050	2400 x 1200
✓	✓	✓



WITHOUT LIGHT



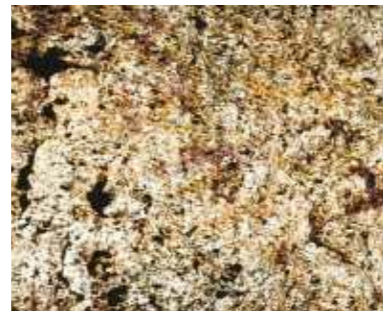
WITH LIGHT

D. Green

Sizes Available (mm)		
1220 x 610	2100 x 1050	2400 x 1200
✓	✓	✓



WITHOUT LIGHT



WITH LIGHT

Golden

Sizes Available (mm)		
1220 x 610	2100 x 1050	2400 x 1200
✓	✓	✓



WITHOUT LIGHT



WITH LIGHT

Silver Shine

Sizes Available (mm)		
1220 x 610	2100 x 1050	2400 x 1200
✓	✓	✓



WITHOUT LIGHT



WITH LIGHT

Silver Shine Gold

Sizes Available (mm)		
1220 x 610	2100 x 1050	2400 x 1200
✓	✓	✓



WITHOUT LIGHT



WITH LIGHT

Burning Forest Copper

Sizes Available (mm)		
1220 x 610	2100 x 1050	2400 x 1200
✓	✓	✓



WITHOUT LIGHT



WITH LIGHT

Galaxy Black

Sizes Available (mm)		
1220 x 610	2100 x 1050	2400 x 1200
✓	✓	✓



WITHOUT LIGHT



WITH LIGHT

Silver Grey

Sizes Available (mm)		
1220 x 610	2100 x 1050	2400 x 1200
✓	✓	✓



WITHOUT LIGHT



WITH LIGHT

Ice Pearl

Sizes Available (mm)		
1220 x 610	2100 x 1050	2400 x 1200
✓	✓	✓



WITHOUT LIGHT



WITH LIGHT

Green Pearl

Sizes Available (mm)		
1220 x 610	2100 x 1050	2400 x 1200
✓	✓	✓



WITHOUT LIGHT



WITH LIGHT

Jade Green

Sizes Available (mm)		
1220 x 610	2100 x 1050	2400 x 1200
✓	NA	NA

SLATE / MICA COLORS

UV TRANSLUCENT



WITHOUT LIGHT



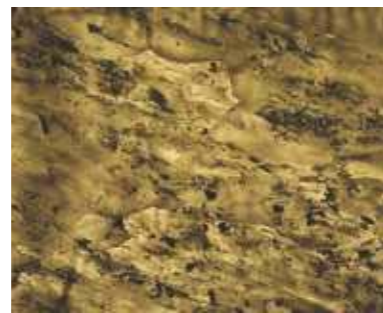
WITH LIGHT

Cal Grey

Sizes Available (mm)		
1220 x 610	2100 x 1050	2400 x 1200
✓	✓	✓



WITHOUT LIGHT



WITH LIGHT

Mal Grey

Sizes Available (mm)		
1220 x 610	2100 x 1050	2400 x 1200
✓	✓	✓



WITHOUT LIGHT



WITH LIGHT

Lime Pink

Sizes Available (mm)		
1220 x 610	2100 x 1050	2400 x 1200
✓	✓	✓



WITHOUT LIGHT



WITH LIGHT

Pink Pearl

Sizes Available (mm)		
1220 x 610	2100 x 1050	2400 x 1200
✓	✓	✓

SANDSTONE & MARBLE

UV TRANSLUCENT



WITHOUT LIGHT



WITH LIGHT

Teakwood Sandstone

Sizes Available (mm)		
1220 x 610	2100 x 1050	2400 x 1200
✓	✓	✓



WITHOUT LIGHT



WITH LIGHT

White Sandstone

Sizes Available (mm)		
1220 x 610	2100 x 1050	2400 x 1200
✓	✓	✓



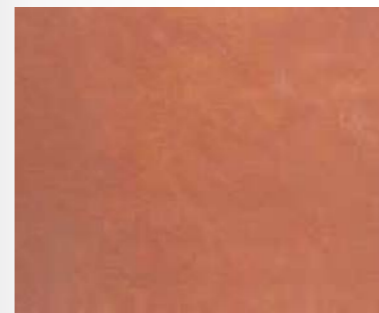
WITHOUT LIGHT



WITH LIGHT

Tint Mint Sandstone

Sizes Available (mm)		
1220 x 610	2100 x 1050	2400 x 1200
✓	✓	✓



WITHOUT LIGHT



WITH LIGHT

Red Sandstone

Sizes Available (mm)		
1220 x 610	2100 x 1050	2400 x 1200
✓	✓	✓



WITHOUT LIGHT



WITH LIGHT

Rainforest Brown

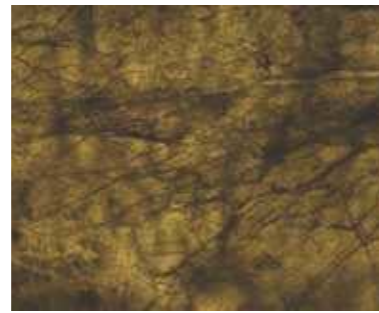
Sizes Available (mm)		
1220 x 610	2100 x 1050	2400 x 1200
✓	✓	✓

SANDSTONE & MARBLE

UV TRANSLUCENT



WITHOUT LIGHT



WITH LIGHT

Rainforest Green

Sizes Available (mm)		
1220 x 610	2100 x 1050	2400 x 1200
✓	✓	✓



WITHOUT LIGHT



WITH LIGHT

Rainbow Sandstone

Sizes Available (mm)		
1220 x 610	2100 x 1050	2400 x 1200
✓	✓	✓



WITHOUT LIGHT



WITH LIGHT

Monsoon Black

Sizes Available (mm)		
1220 x 610	2100 x 1050	2400 x 1200
✓	✓	✓



WITHOUT LIGHT



WITH LIGHT

Ice Black

Sizes Available (mm)		
1220 x 610	2100 x 1050	2400 x 1200
✓	✓	✓

SANDSTONE & MARBLE

UV TRANSLUCENT



WITHOUT LIGHT



WITH LIGHT

Spider White

Sizes Available (mm)		
1220 x 610	2100 x 1050	2400 x 1200
✓	✓	✓



WITHOUT LIGHT



WITH LIGHT

Spider Black

Sizes Available (mm)		
1220 x 610	2100 x 1050	2400 x 1200
✓	✓	✓



WITHOUT LIGHT



WITH LIGHT

Silvia

Sizes Available (mm)		
1220 x 610	2100 x 1050	2400 x 1200
✓	✓	✓

fabric backing



stone
vener
swatches

SLATE / MICA COLORS

FABRIC BACKING



Indian Autumn

Sizes Available (mm)		
1220 x 610	2100 x 1050	2400 x 1200
✓	✓	✓



Indian Autumn Rustic

Sizes Available (mm)		
1220 x 610	2100 x 1050	2400 x 1200
✓	✓	✓



Sanjayani White

Sizes Available (mm)		
1220 x 610	2100 x 1050	2400 x 1200
✓	✓	✓



Multi Color

Sizes Available (mm)		
1220 x 610	2100 x 1050	2400 x 1200
✓	✓	✓



Multi Color Grey

Sizes Available (mm)		
1220 x 610	2100 x 1050	2400 x 1200
✓	NA	NA



Multi Pink

Sizes Available (mm)		
1220 x 610	2100 x 1050	2400 x 1200
✓	✓	✓



California Gold

Sizes Available (mm)		
1220 x 610	2100 x 1050	2400 x 1200
✓	✓	✓



Terra Red

Sizes Available (mm)		
1220 x 610	2100 x 1050	2400 x 1200
✓	✓	✓



Tan

Sizes Available (mm)		
1220 x 610	2100 x 1050	2400 x 1200
✓	✓	✓

SLATE / MICA COLORS

FABRIC BACKING



D. Black

Sizes Available (mm)		
1220 x 610	2100 x 1050	2400 x 1200
✓	✓	✓



Black

Sizes Available (mm)		
1220 x 610	2100 x 1050	2400 x 1200
✓	✓	✓



Copper

Sizes Available (mm)		
1220 x 610	2100 x 1050	2400 x 1200
✓	✓	✓



Copper-New

Sizes Available (mm)		
1220 x 610	2100 x 1050	2400 x 1200
✓	✓	✓



Jeera Green

Sizes Available (mm)		
1220 x 610	2100 x 1050	2400 x 1200
✓	✓	✓



Ocean Green

Sizes Available (mm)		
1220 x 610	2100 x 1050	2400 x 1200
✓	✓	✓



D. Green

Sizes Available (mm)		
1220 x 610	2100 x 1050	2400 x 1200
✓	✓	✓



Golden

Sizes Available (mm)		
1220 x 610	2100 x 1050	2400 x 1200
✓	✓	✓



Silver Shine

Sizes Available (mm)		
1220 x 610	2100 x 1050	2400 x 1200
✓	✓	✓

SLATE / MICA COLORS

FABRIC BACKING



Silver Shine Gold

Sizes Available (mm)		
1220 x 610	2100 x 1050	2400 x 1200
✓	✓	✓



Burning Forest Copper

Sizes Available (mm)		
1220 x 610	2100 x 1050	2400 x 1200
✓	✓	✓



Galaxy Black

Sizes Available (mm)		
1220 x 610	2100 x 1050	2400 x 1200
✓	✓	✓



Silver Grey

Sizes Available (mm)		
1220 x 610	2100 x 1050	2400 x 1200
✓	✓	✓



Star Galaxy

Sizes Available (mm)		
1220 x 610	2100 x 1050	2400 x 1200
✓	NA	NA



Ice Pearl

Sizes Available (mm)		
1220 x 610	2100 x 1050	2400 x 1200
✓	NA	NA

SLATE / MICA COLORS

FABRIC BACKING



Green Pearl

Sizes Available (mm)		
1220 x 610	2100 x 1050	2400 x 1200
✓	NA	NA



Jade Green

Sizes Available (mm)		
1220 x 610	2100 x 1050	2400 x 1200
✓	NA	NA



Cal Grey

Sizes Available (mm)		
1220 x 610	2100 x 1050	2400 x 1200
✓	✓	✓



Mal Grey

Sizes Available (mm)		
1220 x 610	2100 x 1050	2400 x 1200
✓	✓	✓

SANDSTONE & MARBLE

FABRIC BACKING



Teakwood Sandstone

Sizes Available (mm)		
1220 x 610	2100 x 1050	2400 x 1200
✓	NA	NA



White Sandstone

Sizes Available (mm)		
1220 x 610	2100 x 1050	2400 x 1200
✓	NA	NA



Tint Mint Sandstone

Sizes Available (mm)		
1220 x 610	2100 x 1050	2400 x 1200
✓	NA	NA



Red Sandstone

Sizes Available (mm)		
1220 x 610	2100 x 1050	2400 x 1200
✓	NA	NA



Rainforest Brown

Sizes Available (mm)		
1220 x 610	2100 x 1050	2400 x 1200
✓	NA	NA



Ice Black

Sizes Available (mm)		
1220 x 610	2100 x 1050	2400 x 1200
✓	NA	NA

SANDSTONE & MARBLE

FABRIC BACKING



Rainbow Sandstone

Sizes Available (mm)		
1220 x 610	2100 x 1050	2400 x 1200
✓	NA	NA



Monsoon Black

Sizes Available (mm)		
1220 x 610	2100 x 1050	2400 x 1200
✓	NA	NA



Rainforest Green

Sizes Available (mm)		
1220 x 610	2100 x 1050	2400 x 1200
✓	NA	NA



Spider White

Sizes Available (mm)		
1220 x 610	2100 x 1050	2400 x 1200
✓	NA	NA



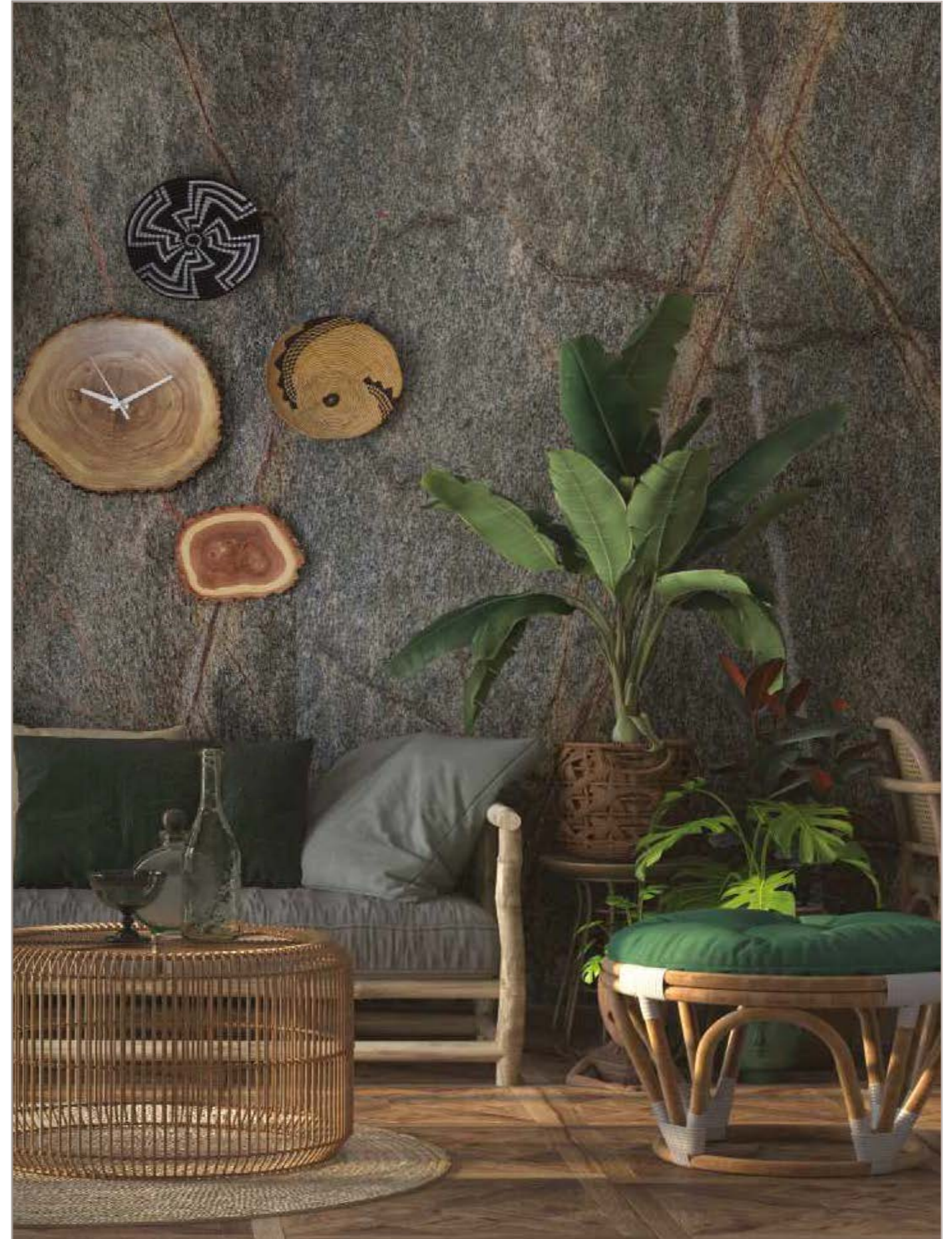
Spider Black

Sizes Available (mm)		
1220 x 610	2100 x 1050	2400 x 1200
✓	NA	NA



Silvia

Sizes Available (mm)		
1220 x 610	2100 x 1050	2400 x 1200
✓	NA	NA



cellulose backing



stone
vener
swatches

SLATE / MICA COLORS

CELLULOSE BACKING



Black

Sizes Available (mm)		
1220 x 610	2100 x 1050	2400 x 1200
✓	NA	NA



California Gold

Sizes Available (mm)		
1220 x 610	2100 x 1050	2400 x 1200
✓	NA	NA



D. Black

Sizes Available (mm)		
1220 x 610	2100 x 1050	2400 x 1200
✓	NA	NA



Indian Autumn

Sizes Available (mm)		
1220 x 610	2100 x 1050	2400 x 1200
✓	NA	NA



Indian Autumn Rustic

Sizes Available (mm)		
1220 x 610	2100 x 1050	2400 x 1200
✓	NA	NA



Multi Color

Sizes Available (mm)		
1220 x 610	2100 x 1050	2400 x 1200
✓	NA	NA



Multi Pink

Sizes Available (mm)		
1220 x 610	2100 x 1050	2400 x 1200
✓	NA	NA



Sanjayani White

Sizes Available (mm)		
1220 x 610	2100 x 1050	2400 x 1200
✓	NA	NA



Tan

Sizes Available (mm)		
1220 x 610	2100 x 1050	2400 x 1200
✓	NA	NA

SLATE / MICA COLORS

CELLULOSE BACKING



Terra Red

Sizes Available (mm)		
1220 x 610	2100 x 1050	2400 x 1200
✓	NA	NA



Burning Forest Copper

Sizes Available (mm)		
1220 x 610	2100 x 1050	2400 x 1200
✓	NA	NA



Copper

Sizes Available (mm)		
1220 x 610	2100 x 1050	2400 x 1200
✓	NA	NA



Copper-New

Sizes Available (mm)		
1220 x 610	2100 x 1050	2400 x 1200
✓	NA	NA



D. Green

Sizes Available (mm)		
1220 x 610	2100 x 1050	2400 x 1200
✓	NA	NA



Galaxy Black

Sizes Available (mm)		
1220 x 610	2100 x 1050	2400 x 1200
✓	NA	NA

SLATE / MICA COLORS

CELLULOSE BACKING



Golden

Sizes Available (mm)		
1220 x 610	2100 x 1050	2400 x 1200
✓	NA	NA



Jeera Green

Sizes Available (mm)		
1220 x 610	2100 x 1050	2400 x 1200
✓	NA	NA



Ocean Green

Sizes Available (mm)		
1220 x 610	2100 x 1050	2400 x 1200
✓	NA	NA



Silver Grey

Sizes Available (mm)		
1220 x 610	2100 x 1050	2400 x 1200
✓	NA	NA



Silver Shine

Sizes Available (mm)		
1220 x 610	2100 x 1050	2400 x 1200
✓	NA	NA



Silver Shine Gold

Sizes Available (mm)		
1220 x 610	2100 x 1050	2400 x 1200
✓	NA	NA

metallic veneer

stone veneer swatches



METALLIC VENEERS

NR GRADE



Copper Metal Finish

Sizes Available (mm)		
1220 x 610	2100 x 1050	2400 x 1200
✓	✓	✓



Gold Metal Finish

Sizes Available (mm)		
1220 x 610	2100 x 1050	2400 x 1200
✓	✓	✓



Silver Metal Finish

Sizes Available (mm)		
1220 x 610	2100 x 1050	2400 x 1200
✓	✓	✓



Violet Metal Finish

Sizes Available (mm)		
1220 x 610	2100 x 1050	2400 x 1200
✓	✓	✓



Blue Metal Finish

Sizes Available (mm)		
1220 x 610	2100 x 1050	2400 x 1200
✓	✓	✓

METALLIC VENEERS

NR GRADE



Green Metal Finish

Sizes Available (mm)		
1220 x 610	2100 x 1050	2400 x 1200
✓	✓	✓



Pink Metal Finish

Sizes Available (mm)		
1220 x 610	2100 x 1050	2400 x 1200
✓	✓	✓



Gold Metal Finish

Sizes Available (mm)		
1220 x 610	2100 x 1050	2400 x 1200
✓	✓	✓



Red Metal Finish

Sizes Available (mm)		
1220 x 610	2100 x 1050	2400 x 1200
✓	✓	✓



Orange Metal Finish

Sizes Available (mm)		
1220 x 610	2100 x 1050	2400 x 1200
✓	✓	✓

RUST VENEERS

NR GRADE



Rust Veneer

Sizes Available (mm)		
1220 x 610	2100 x 1050	2400 x 1200
✓	✓	✓

concrete veneer



stone
vener
swatches

CONCRETE VENEERS

NR GRADE



Ivory (with holes)

Sizes Available (mm)		
1220 x 610	2400 x 1200	3000 x 1250
✓	✓	✓



White (with holes)

Sizes Available (mm)		
1220 x 610	2400 x 1200	3000 x 1250
✓	✓	✓



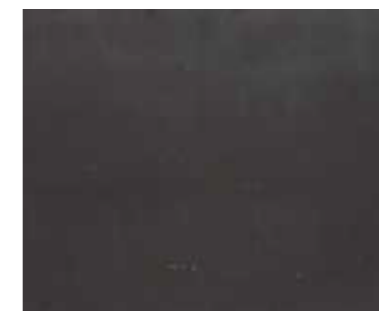
Light Grey (With Holes)

Sizes Available (mm)		
1220 x 610	2400 x 1200	3000 x 1250
✓	✓	✓



Dark Grey (With Holes)

Sizes Available (mm)		
1220 x 610	2400 x 1200	3000 x 1250
✓	✓	✓



Black (With Holes)

Sizes Available (mm)		
1220 x 610	2400 x 1200	3000 x 1250
✓	✓	✓

CONCRETE VENEERS

NR GRADE



Grey CV 1

Sizes Available (mm)		
1220 x 610	2400 x 1200	3000 x 1250
✓	✓	✓



Grey CV 2

Sizes Available (mm)		
1220 x 610	2400 x 1200	3000 x 1250
✓	✓	✓



Grey CV 3

Sizes Available (mm)		
1220 x 610	2400 x 1200	3000 x 1250
✓	✓	✓



Blue CV 1

Sizes Available (mm)		
1220 x 610	2400 x 1200	3000 x 1250
✓	✓	✓



Blue CV 2

Sizes Available (mm)		
1220 x 610	2400 x 1200	3000 x 1250
✓	✓	✓



Blue CV 3

Sizes Available (mm)		
1220 x 610	2400 x 1200	3000 x 1250
✓	✓	✓



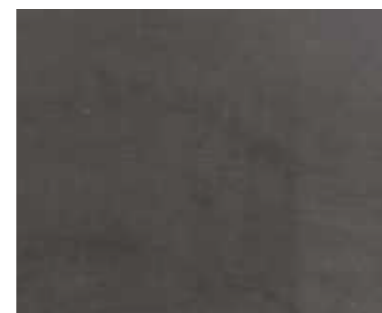
Black CV 1

Sizes Available (mm)		
1220 x 610	2400 x 1200	3000 x 1250
✓	✓	✓



Black CV 2

Sizes Available (mm)		
1220 x 610	2400 x 1200	3000 x 1250
✓	✓	✓



Black CV 3

Sizes Available (mm)		
1220 x 610	2400 x 1200	3000 x 1250
✓	✓	✓



mosaic 3D, plain and peel & stick veneer

stone veneer swatches



3D MOSAIC VENEER

NR GRADE



Black

Sizes Available (mm)		
150 x 600	1200 x 600	2100 x 1050
✓	✓	NA



Burning Forest Copper

Sizes Available (mm)		
150 x 600	1200 x 600	2100 x 1050
✓	✓	NA



Indian Autumn Rustic

Sizes Available (mm)		
150 x 600	1200 x 600	2100 x 1050
✓	✓	NA



Tan

Sizes Available (mm)		
150 x 600	1200 x 600	2100 x 1050
✓	✓	NA



Silver Grey

Sizes Available (mm)		
150 x 600	1200 x 600	2100 x 1050
✓	✓	NA



Backside of peel & stick

Sizes Available (mm)		
150 x 600	1200 x 600	2100 x 1050
✓	NA	NA

PLAIN MOSAIC VENEER

NR GRADE



Black

Sizes Available (mm)		
150 x 600	1200 x 600	2100 x 1050
✓	✓	NA



Burning Forest Copper

Sizes Available (mm)		
150 x 600	1200 x 600	2100 x 1050
✓	✓	NA



Indian Autumn Rustic

Sizes Available (mm)		
150 x 600	1200 x 600	2100 x 1050
✓	✓	NA



Tan

Sizes Available (mm)		
150 x 600	1200 x 600	2100 x 1050
✓	✓	NA



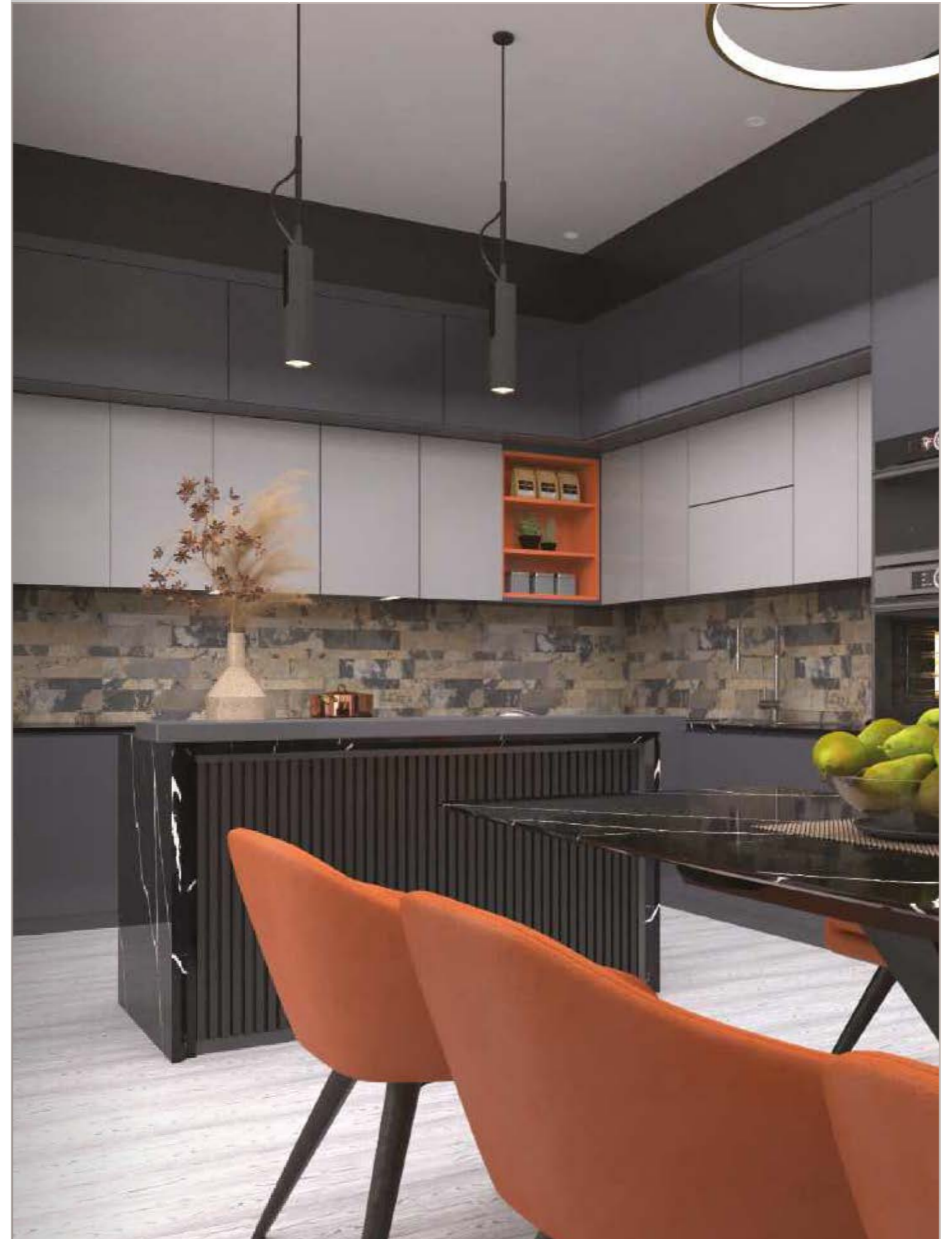
Silver Grey

Sizes Available (mm)		
150 x 600	1200 x 600	2100 x 1050
✓	✓	NA



Backside of peel & stick

Sizes Available (mm)		
150 x 600	1200 x 600	2100 x 1050
✓	NA	NA



Features & installation

APPLICATIONS

Ultra-thin slate stone is a natural stone veneer that can be fixed to many different indoor and outdoor surfaces, including:

- Architectural
- Interior & Exterior
- Doors & Cabinets
- Furniture
- Trim & Backsplashes
- Marine & RV
- Kitchens
- Bathrooms
- Flooring
- Signage

Its light weight and flexibility are appropriate for many applications such as wall panelling, building cladding, and vertical/horizontal surfaces not previously considered for stone due to weight or flaking issues.

Backing & Substrates

Our natural stone veneer laminates come in several finishes like fiberglass, fabric, and cellulose backing. Each is suited for different applications.

The fibreglass backing is black in colour with a seam in the middle, which is visible when light passes through it.

Thin slate stone can be applied to MDF, HDF boards, Styrofoam sheets, melamine board, concrete, brick, concrete blocks and slabs, mortar-plastered walls, drywall, plywood, acrylic and other plastic sheets.



PROPERTIES

Look & Finish

- The natural graininess and textural irregularities of stone further enhance the beauty of these thin, flexible veneers.
- It is natural to find colour or texture variations; hence, stone veneer cannot be guaranteed to match with each lot.

- We recommend that material should be accepted in lots of 20, 40, 50 sheets to match. Large orders will be executed in 25, 40, 50 sheets to match. Large orders will be executed in bundles of 25 sheets with 2-3 matching lots in each bundle.

- Exceptions of large lots are also a possibility.

Heat & Temperature Resistance

- The natural stone layer keeps them protected from extreme light, heat and temperature conditions.
- Slate stone veneer can handle high thermal contraction or expansions of most standard construction materials.
- It also handles both high temperatures and freezing without cracking.

Curvature & Bending

- Thin slate stone veneers can be bent with the same flexibility as any plastic sheet product. The backing used gives it enough strength and flexibility.
- They can be bent in concave, convex, arched or radial forms, depending on the nature of curve.
- They can be bent or flexed to a radius of 380 mm along the 1220-mm length. The 610-mm width will also have a slight flex to it.
- Due to the nature of the different thickness of the individual items, the degree of radius varies per item. We recommend testing the flex of the considered item prior to final installation.

ON-SITE USAGE

Tools for Cutting

- Diamond blades used for marble and stone cutting can be used for cutting thin stone veneers.
- Metal cutting tools can also be used to cut stone veneer.
- Any standard carbide or diamond saw blades would work as well.

Installation & Lamination

- Slate stone veneers can be fixed onto surfaces using most standard laminate adhesives that have thick body or foaming quality. Before application, clean, brush and de-grease the receiving surface from dust, oils, etc.
- In the same installation, and depending on adhesive used, it may be necessary to prepare the back of the ultra-thin slate stone veneer with solvent or recommended primer by the adhesive manufacturer. We recommend doing a test area with any adhesive prior to final application.
- Slate stone veneer is used for wall panels on MDF and HDF boards, furniture, woodworking machines, round column cladding, and numerous interior and exterior applications.
- It is also recommended for flooring or countertop applications after sealing the surface of the stone veneer with PU or epoxy sealers to avoid scratches/abrasion. Polyurethane sealers can also be used if stone veneer is used for domestic applications.
- Stone veneers can be directly fixed onto concrete floors and walls with the help of epoxy and other PU glues. They may also be used in illumination application such as lamp shades or backlight applications as translucent material or the other translucency applications.

Adhesion & Sealing

- Knowledge of special adhesives, and the respective surfaces on which they are recommended, is critical to ensure superior installation when using ultra-thin slate stone veneers. We recommend testing the selected adhesive prior to proceeding with installation. Please evaluate humidity and temperature of the environment first.
- In case of outdoor application, thermal expansion should be taken into account. Thin slate stone is a veneer; it must expand and contract, which is recommended by the adhesive manufacturer. The bond must be tested by the installer before final installation.
- Thin slate stone veneers can be sealed just like most slate/stone tiles. Please follow manufacturer's instructions for best results. As sealants are offered in varying degrees of lustre or sheen, we recommended you confirm the reflectance prior to complete installation to get the desired effect.

Recommended Adhesives & Fillers

- Polyester-based gap filler putties
- Epoxies
- Silicone (with primer only)
- Polyurethane wood glues
- Thick latex-type adhesive, thin set, etc. (use only where air-drying can take place)
- Construction grade multi-purpose adhesives (e.g. Liquid Nails or PL Premium Polyurethane or similar)

Note 1:

The back of the thin slate stone veneer may require a filler-type adhesive in some cases. Polyurethane wood glues work well for most applications to fill gaps. For wet applications like showers and bathroom, the use of epoxy is best.

Note 2: Pressure-sensitive adhesives are also recommended due to the even backing of the thin slate stone veneer. Nowadays, you get this in ready-to-peel-and-use format (pressure-sensitive glue is applied on the back of thin slate stone veneers; this is covered with paper that you peel just before sticking).

Pressing

- Thin slate stone veneers have natural, rough splittable surface with a tolerance of up to 2 mm. Thickness-equalizing additions protect the veneers from being damaged.
- Silicon blanket is recommended for pressing 7 mm thick rubber plates with a shore grade of 50 and a temperature resistance of at least +80°C.
- It is important that the rubber matt has an insulating effect, so that the press time can be therefore extended depending on the adhesive type and press temperature of 80° C, press time should be approximately 6 minutes.
- Depending on the press configuration, the pressure has to be carefully set.

Tiling

- Thin slate stone veneer can be used to create a tiled effect by leaving a grout joint between cut pieces of material. Test results have shown that epoxy grouts work well to fill between the cut veneers. By removing the material just under the grout joint, a deeper grout can be achieved.
- Epoxy grouts are available in many colours to match or coordinate with the different colours of our ultra-thin slate stone.
- On final clean-up of the epoxy with a sponge, the epoxy can also be used to seal and fill the stone surface.

Our Recommendation: In this installation, the entire surface of the ultra-thin slate stone should be sealed with appropriate sealer and impregnator as a final step to ensure complete satisfaction.



Polyester Resin Sheets (NR Grade)

- Thin slate stone veneer sheets are mainly composed of fiberglass and polyester resin.
- There are three kinds of resin: normal sheet grade resin, fire-retardant resin, and ultra-violet resin
- The NR Grade sheet material is made of normal polyester grade resin.

FR Resin Sheets (FR Grade)

- FR resin sheet is made from fire-retardant polyester resin. The main component of the sheet is resin, which in this case is based on Isophthalic resin, manufactured by the physical addition of halogenated additives and antimony trioxide to give excellent fire-retardant properties with reference to IS 6746.
- This resin has the added advantage of chemical resistance to several acids, solvents, etc.
- Recommended for use where fire hazards are one of the main considerations besides the requirement of chemical corrosion resistance.

Polyester Resin Sheets (Translucent UV Grade)

- Thin slate stone veneer sheets are mainly composed of fiberglass and polyester resin.
- Sheets made from ultra-violet resin are translucent and made from ultra-violet resin.

PVA Stone Veneer (Fabric Backing Grade)

- This material is made with cotton fabric and poly-vinyl acetate copolymer glue, which is white emulsion and is water based.
- The final product is called fabric backing stone veneer because it is 100% eco-friendly and without any solvent-based glue.
- This is environment-friendly and is very flexible as compared to normal polyester resin material.

Stone Veneer on MDF/HDF

- Heat press is required to press stone veneer on MDF/HDF under 10 tons pressure and 120° centigrade heat to activate the glue for 2-5 minutes for good industrial results.
- Glues recommended are PU hot melt glue and white water-based polymer emulsion called ethylene vinyl acetate copolymer glue. The glue can be found in local markets.

Recommended Websites for Glues & Sealers

- www.laticrete.com
- www.akemi.com
- www.wacker.com
- www.lantania.it
- www.micraclesealants.com
- www.keliberit.com
- www.henkel.com
- www.mapei.com

These companies are multinationals and the local dealer can be contacted in the area. Visit their websites for recommended glues for NR grade sheet application on MDF & HDF. Companies may recommend white emulsion polymer glue or polyurethane foaming glue or polyurethane double-component non-foaming glue depending on the hot press machine available with the user.

Stone Veneer on Concrete or Mortar Cement Plastered Wall or Gypsum Board

Epoxy-based grouts available in the market with flexibility component are recommended. Contact local dealer/engineer of the area by visiting websites www.mapei.com & www.laticrete.com or local suppliers of the similar products.

Self-Adhesive (Peel and Stick) Stone Veneer

It is coated with pressure-sensitive glues made in India. The pressure-sensitive glue paper is imported from Europe and can be made available on request.

Sealers and Impregnators

- Stone veneer requires sealers and impregnators for stain and scratch protection.
- A stone sealer/impregnator is a penetrating sealant that provides protection against both water- and oil-borne stains. These properties are chemically referred to as hydrophobic and oleophobic effects.
- The sealing properties normally last for several years. This property is particularly important in confined or occupied areas and in large-scale projects where clean air standards are strictly enforced.
- The sealers and impregnators available in the market are polyurethane matt and glossy, water-based, solvent-based and silicone-based sealers and impregnators. All these sealers are similar to the ones used in sandstone and slate industries.

Websites for Sealers & Impregnators

For your local dealer, please visit
www.micraclesealants.com
www.laticrete.com
www.wacker.com
www.akemi.com

Flooring

- Stone veneer with more quartz content is suitable for flooring on MDF & HDF and is being produced at present in Europe and Asia.
- If samples are required, they can be forwarded on the buyer's courier number.

WEIGHT OF THIN SLATE STONE VENEER

Sr.No	Size	Sqr. Mtr of sheet	Weight of sheet	Weight per Sq. Mtr.	Average Weight of Sheet	Average Weight per Sq. Mtr.
	in mm	M2	kgs Min - Max	kgs Min-Max	kgs	kgs
1	1220 x 610	0.744	1.30-2.05	1.75-2.75	1.67	2.25
2	2100 x 1050	2.205	3.85-6.62	1.75-3.00	5.24	2.37
3	2400 x 1200	2.88	5.10-8.65	1.75-3.00	6.88	2.37

Application of flexible real stone veneer

#	Stone Veneer Finish	Constituents	Applications	Remarks
1	NR Grade (Fiberglass backing)	Stone Layer + Polyester Resin + Fiberglass	Interior & Exterior Door & Cabinets, Furniture, Kitchens, Bathrooms, Showers, Flooring for low traffic areas, Signage-Wall cladding, Trim & Backsplashes etc.	Thickness: 1.5 – 2 mm
2	UV Translucent (Fiberglass backing)	Stone Layer + UV Resin + Fiberglass	Interior, Exterior, Door & Cabinets with back lighting, Furniture with backlighting, Kitchens & any decoration purpose where translucency is required and backlighting is done.	Thickness: 1.5 – 2 mm
3	PVA Grade (Fabric backing Sheets)	Stone Layer + Water-based Glue (Polyvinyl acetate (PVA)) copolymer + Cotton Fabric	Special extra flexible applications like stationary, bags, edges of doors & furniture, dress accessories, bags accessories, shoes accessories, calendars, menus etc. More suitable for indoor applications.	Thickness: 0.5 – 0.7 mm
4	Real Sand-stone Veneer (Fiberglass backing)	Stone Layer + Polyester Resin + Fiberglass	Interior, Exterior, Door & Cabinets, Furniture, Kitchens, Bathrooms, Showers, Flooring, Signage, Wall cladding, Trim & Backsplashes etc.	Thickness: 1.5 – 3 mm



Data sheet for thin slate stone veneer

#	Material	Qty Kg/Sq. Mtr
1	Polyester Resin/PVA Adhesive	1.670
2	Backing Material (Fibre Glass/Cotton Fabric)	0.200
3	Natural Stone	0.380
Total weight per Sq mtr.		2.000 – 2.250

Thickness of Material		
#	Particulars	Thickness in mm
4	Thickness of Natural Stone Layer	0.50
5	Thickness of other Chemicals backing	0.80
6	Total Thickness of Slate Stone Veneer Sheet	1.20–1.50

	Tests conducted at testing laboratory in India which is ISO 9001:2000 approved internationally	Test value		Protocol
		SLATE	MICA	
7	Water absorption, % by Wt. (Test carried out on thin slate specimen)	2.50	1.9	ASTM C-121 guidelines
8	Water Absorption, % Wt. (Test carried out on thin slate specimen pasted on marble piece)	0.17	0.12	ASTM C-97 guidelines
9	Abrasion Test –Average wear, mm–max. wear on individual specimen, mm	0.7 0.8	0.9 1.0	IS: 9162-1979 guidelines
10	Density (Mass per unit area, Kg/M ²)	1.45	1.66	IS: 12866-1989 guidelines
11	Compressive Strength, MPa (at 10% deformation)	10	10	ASTM D 695-15 guidelines
12	Tensile Strength, MPa	51	51	ASTM D 638-14 guidelines



our values, our world

progress through
empowerment

5

Excellence in quality is not an act for us, it is a habit.

For 30+ years, we have been a part of an empowering vision and a value system deeply rooted in respect, care and integrity. Some of our habits of excellence include -

Stick to your word

In today's times, we know how important trust is. We've always ensured we deliver what we promise, come rain or sunshine. Our work is driven by our strong sense of commitment to everything, whether it's quantity, design, or timelines.

Apart from business matters, we're also committed to helping our customers' business grow. We offer advice and guidance on selecting the right material, proper use, design and architectural plans, etc. The PCI team, through prompt responses and solution-oriented attitude, always stands by its customers.

Do everything with integrity

Integrity is at the core of everything we do. It keeps us responsible and honest. All business is conducted in a fair, transparent, and ethical manner.

Help workers and employees excel

We are committed to our workers – their lives, their progress and their well-being. By offering them opportunities for personal advancement and better wages, we want them to lead dignified lives, gender notwithstanding.

PCI is a company that cares about its local communities. That is why we hire local people as much as we can. Ethical labour is the need of the hour and we're happy to be a part of this change.

Continuous on-the-job training equips employees with new skills and knowledge required for their growth. We also ensure all safety norms are met and mandatory protective workwear is used.

Make better, socially responsible choices

To live on this planet, we must do so responsibly. As a responsible company, we strive to make sustainable choices that can help our future generations.

Energy efficiency and sustainable development are at the crux of our ideas and execution. The company's efforts at responsible waste disposal and rainwater harvesting in our factory as well as our resolve to introduce more eco-friendly products are some of the steps in this direction. We believe Business, People and Environment should co-exist as equally important goals for progress.

Be caring and compassionate

As a forward-thinking company, we ensure this attitude trickles down to all levels of the organization. We view our employees as our family members and their well-being and happiness is our responsibility.

Women constitute more than 50% of our workforce. As a company that is committed towards gender equality and women's empowerment in the workplace, we ensure they have access to opportunities based on their merit. Our firm belief that society will progress if women progress guides our business and ways of working.



“We rise by lifting others”

For us, business is more than making profit. It's about people, community, and compassion. If there is one value that has stuck with us over the years, it is the joy of giving. Giving in any form—money, time, resources—can help alleviate suffering and encourage more people to care.



PCI continues to give to diverse causes, people, and non-profits, all of which are doing fabulous work in the fields of:

- 1 HEALTH AND MEDICAL CARE
- 2 CANCER RESEARCH
- 3 ACID ATTACK VICTIMS
- 4 EDUCATION
- 5 WELFARE OF DESTITUTE PEOPLE
- 6 WELFARE OF SPECIALLY ABLED PEOPLE
- 7 CHILDREN'S WELFARE
- 8 ANIMAL WELFARE, AND MORE.



Sri Sathya Sai Sanjeevani Hospitals



RAJ CMRF COVID-19 Mitigation Fund



ISKCON, Ujjain



PM Cares (Covid)



Narayan Seva Sansthan Udaipur



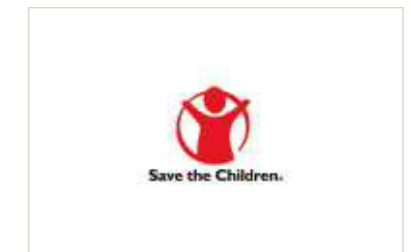
Bombay Medical Aid Foundation Mumbai



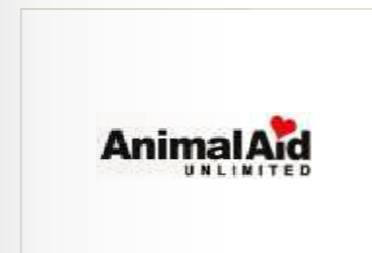
Tara Sansthan Jodhpur



Mangalam Charitable Foundation Mumbai



Bal Raksha Bharat (Save the Children), New Delhi



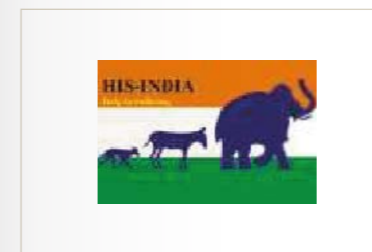
Animal Aid Unlimited Udaipur



Bhagwan Mahaveer Viklang Sahayata Samiti, Jaipur



Apna Ghar Ashram Bharatpur



Help in Suffering Jaipur



CRY - Children Rights and You Mumbai



BMCHRC Delhi

PLATINUM LIFE

Dr. Hosam Shaheen

Mob. 00966 541222246

Email. drhosam.sha@gmail.com